



Slight gathers to waist

Slight gathers to waist

SKIRT OVERCAST ON TO WAISTBAND 3/8" seam (finished)

POCKET SLIT

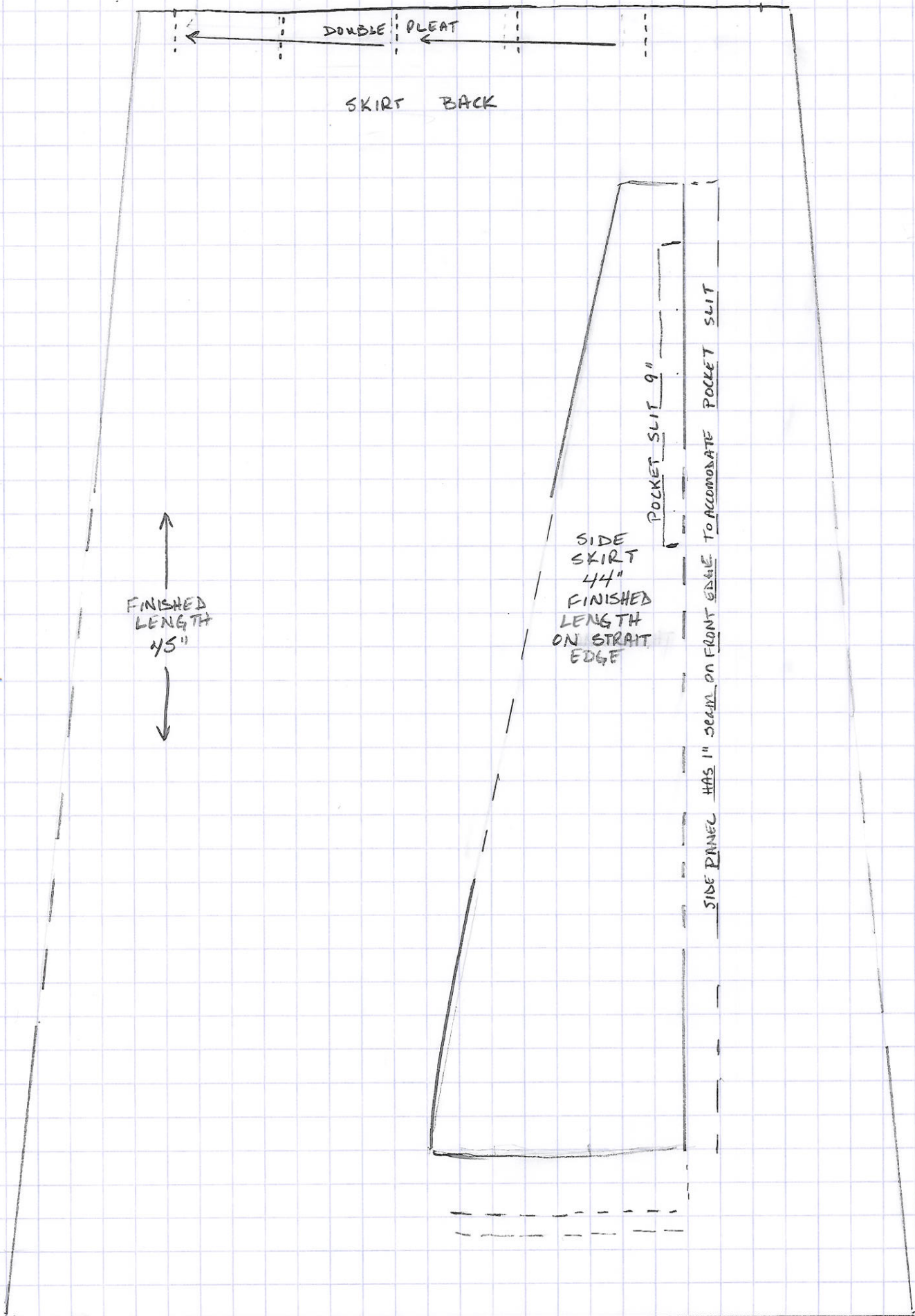
OPENING FOR BUTTON FRONT

POCKET SLIT

SKIRT FRONT

FINISHED LENGTH 44"

Hem is 2.5" deep



DOUBLE PLEAT

SKIRT BACK

FINISHED LENGTH 45"

SIDE SKIRT 44" FINISHED LENGTH ON STRAIT EDGE

POCKET SLIT 9"

SIDE PANEL HAS 1" SEAM ON FRONT EDGE TO ACCOMMODATE POCKET SLIT

HEM IS 2.5" DEEP